

This disassembly instructions is how to gain access to the gears used to fold the tow mirrors of a 2018 GMC Sierra. Note that model years change how the mirrors are assembled, do this repair at your own risk.

Follow along with the attached photos.

1. See the link below for the YouTube of how to remove the upper mirror glass. Tilt the glass down and push from the bottom to unsnap from the mount. For this model year mirror, do not pull out as it does not unsnap from the ideal area of the mount. Disconnect wires.
2. Remove the 5 screws noted to separate the front and back half sections of the mirror. Disconnect wires.
3. Remove the upper and lower chrome caps by releasing the tabs all around the perimeter of the chrome caps. Slide mirror out (extend) almost all the way out, until the "C" clip is visible as noted in photo. Remove the "C" clip. Now the mirror can be pulled completely off the end of the support tubes, loosen and guide wires as needed to remove mirror. Some of the wires can remain in place, support the removed mirror.
4. Using trim tools, separate the parting lines of the all the remaining plastic materials as shown, (five pieces in total) to gain access to the upper and lower pivot points for the folding mirror.
5. Remove the roll pin as noted. I used a C clamp with push pins and sockets to remove the roll pin. The spring located on the upper side of the pivot point make it difficult to remove the roll pin, especially when the roll pin is almost all the way out.
6. With the roll pin removed, the mirror support tubes, shaft, spring and bushing can be removed. Note the position and orientation of the bushings.
7. Photo of the top side of the housing with the shaft and spring removed.
8. Remove two screws as noted in photo, now the lower pivot point mount will slide out. Not pictured, but the drive motor assembly will now be visible on the bottom side.
9. I did not have a photo of the drive motor assembly in this housing. But looking up, remove the 4 mount screws (the 4 larger screws). I did not have a tool to remove the most inboard mount screw under the plastic trim, drill a hole in the plastic to access the inboard screw. As the motor assembly is partially removed from housing, disconnect the motor wire plugs.
10. Remove the remaining four small screws and separate the case halves. Clean up all parts, remove old grease and any corrosion. Now replace the broken or damaged plastic gears with the brass gears as per GruvenParts.com instructions.
11. Extreme low temperature Molykote 33 light grease.
12. Reassemble the drive assembly (brass gears not shown), coat all gears, worm gears and mirror pivot shaft with grease.

13. A difficult part of the reassembly was to reinstall the roll pin in the support tube, because of the strong spring. I had to remove the whole mirror from the door and use a hydraulic press with V block supports to hold in place. Again using a C clamp to press the roll pin into place.

14. Door panel removed to access the four mirror mount nuts.

<https://www.youtube.com/watch?v=JZLDPGE6QGg>

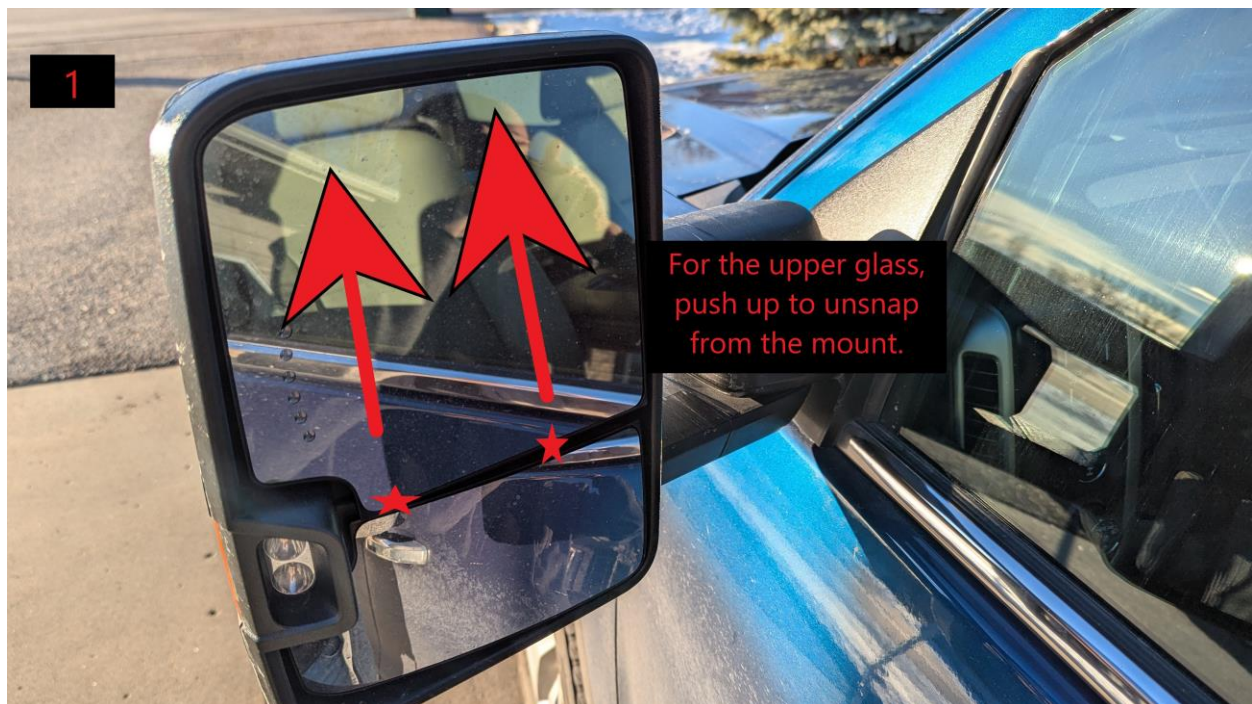
Link for how to remove and install upper glass of the mirror.

<https://www.gruvenparts.com/gm-towing-mirror-brass-gear-set/>

Gruvenparts.com brass gear set and gear install instructions.

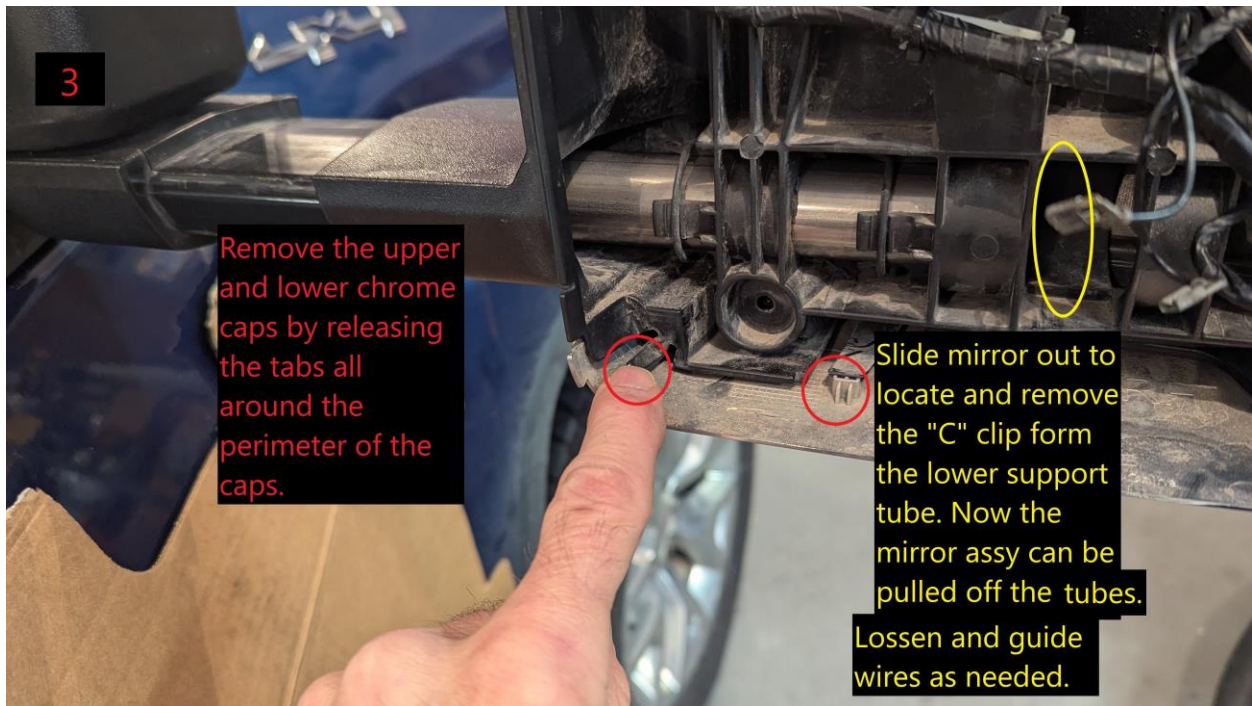
<https://www.youtube.com/watch?v=JTfYtQguWY8>

Door panel removal.



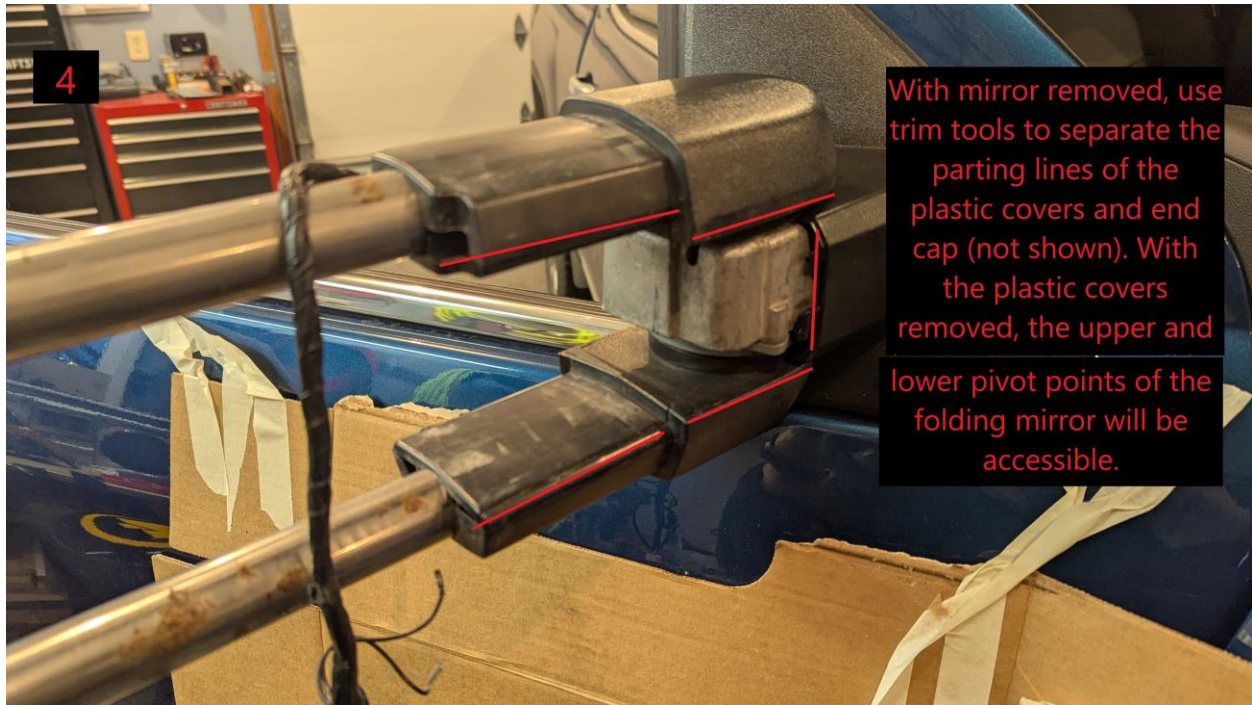


After the glass is removed, remove these five screws to separate the front from the back sides of the mirror assembly.

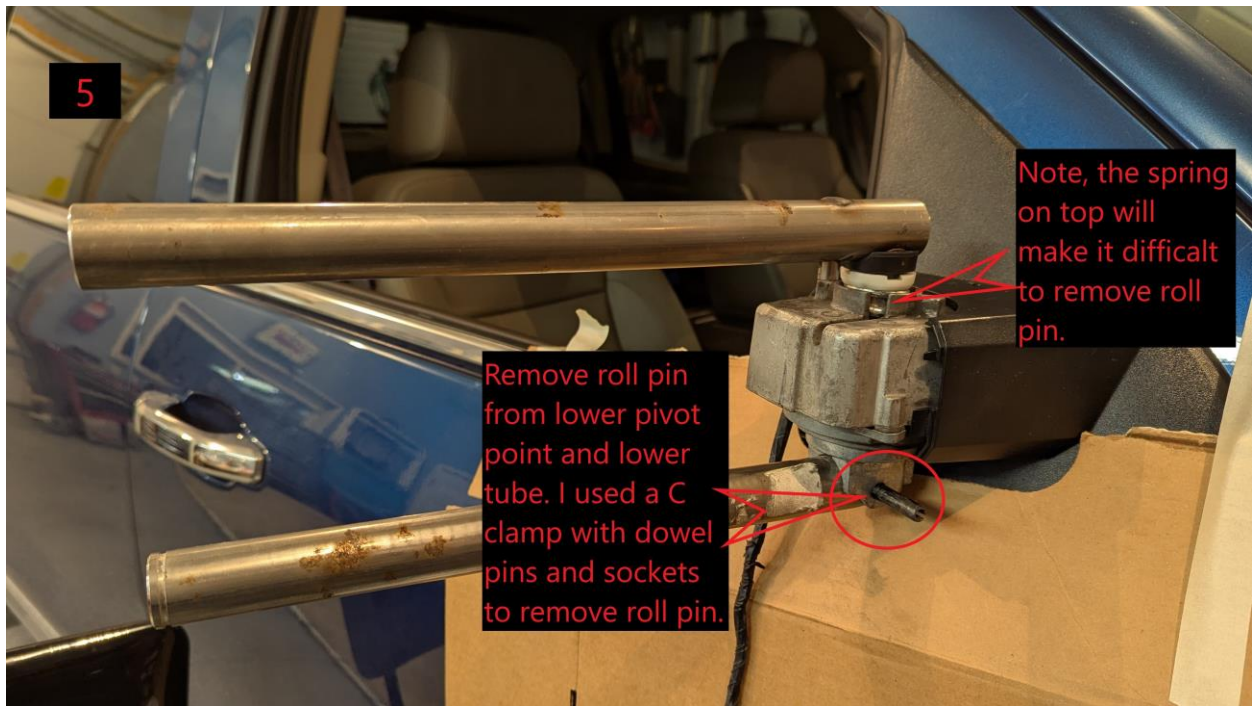


Remove the upper and lower chrome caps by releasing the tabs all around the perimeter of the caps.

Slide mirror out to locate and remove the "C" clip from the lower support tube. Now the mirror assembly can be pulled off the tubes. Loosen and guide wires as needed.

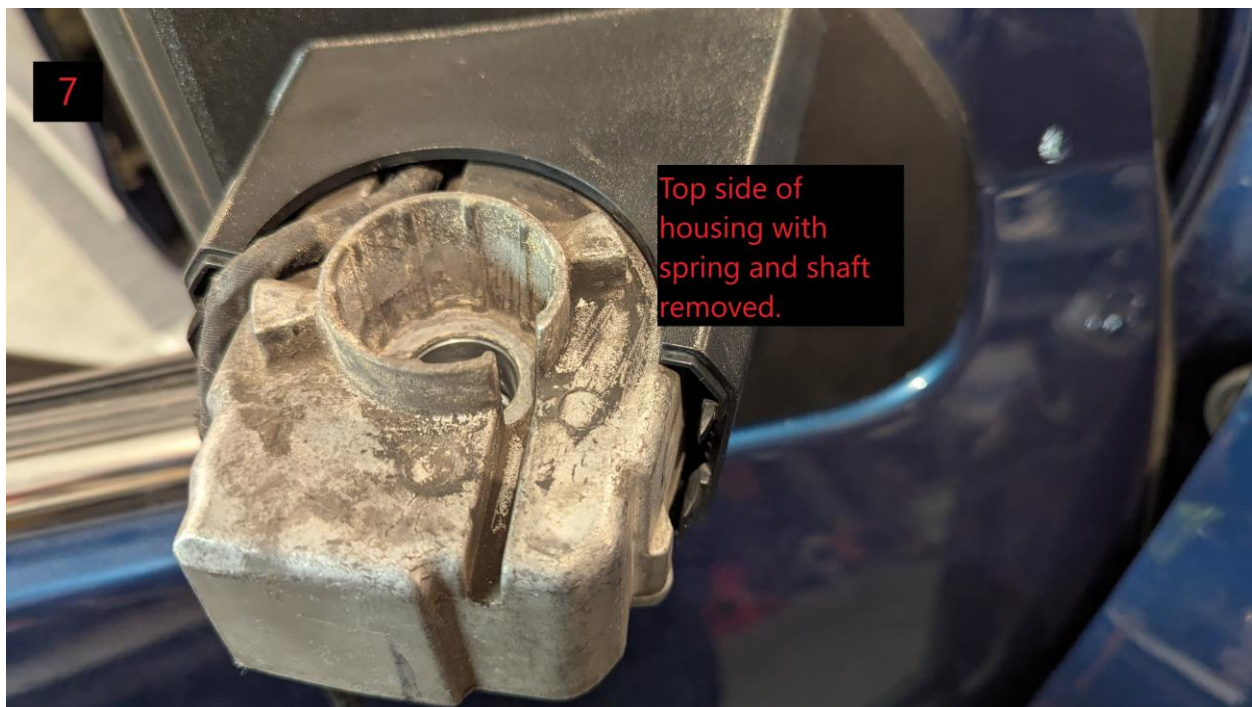


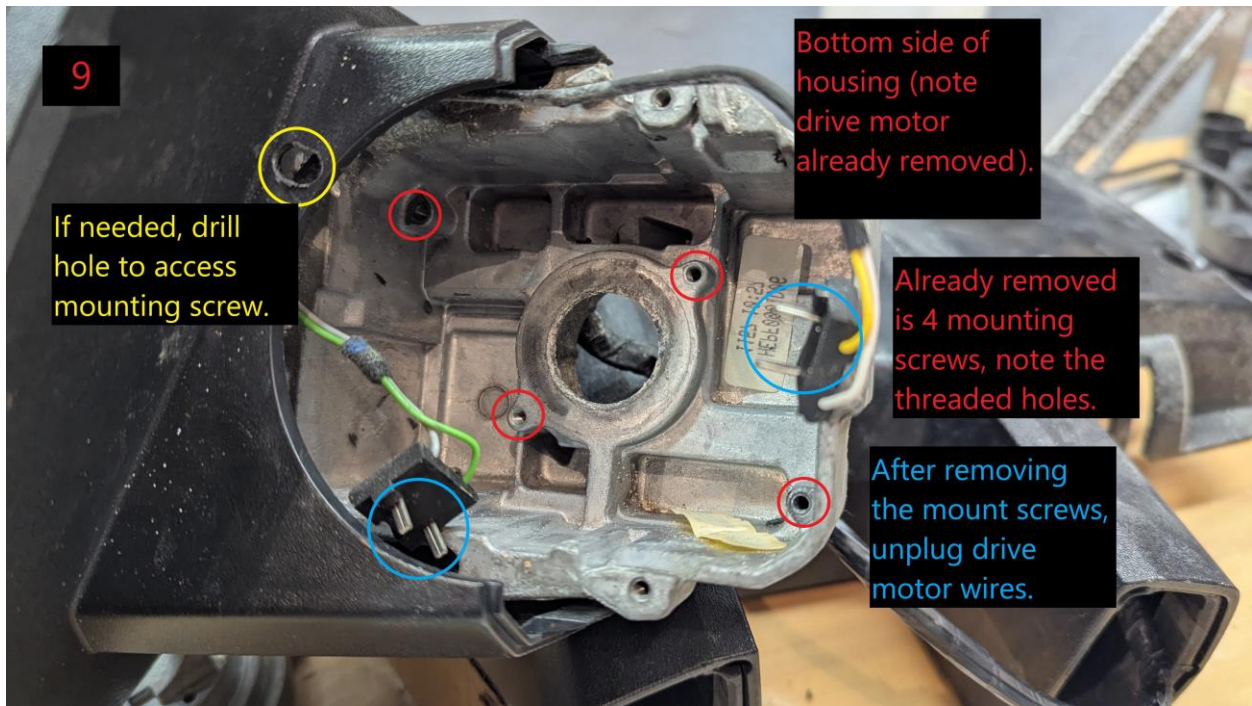
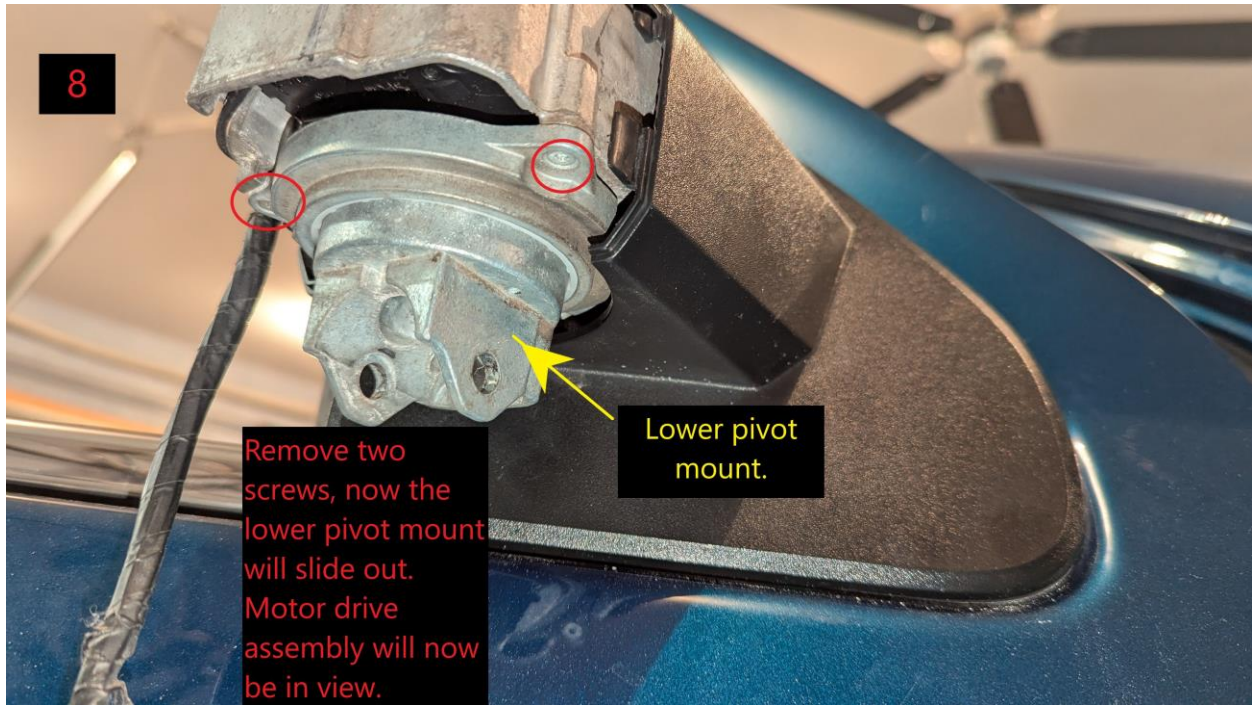
With mirror removed, use trim tools to separate the parting lines of the plastic covers and end cap (not shown). With the plastic covers removed, the upper and lower pivot points of the folding mirror will be accessible.



Remove roll pin from lower pivot point and lower tube. I used a C clamp with dowel pins and sockets to remove roll pin.

Note, the spring on top will make it difficult to remove roll pin.





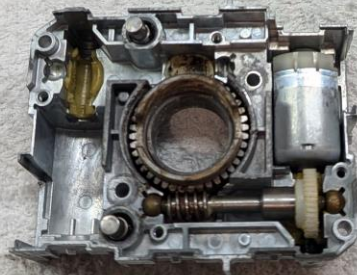
10



Motor drive  
mount  
screws.



Drive assembly  
case half  
screws,  
removed to  
split case halves  
as shown.

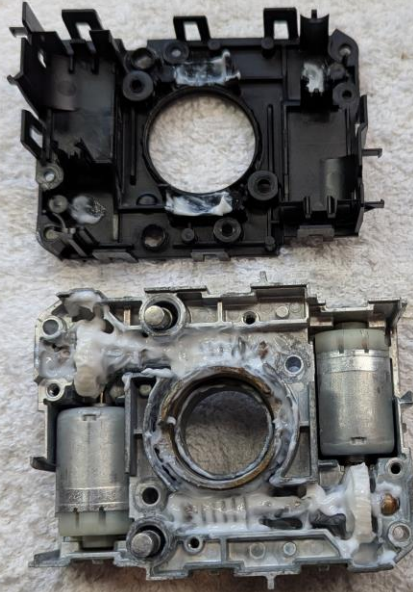


Clean up all parts,  
remove old grease  
and any corrosion.  
Now replace the  
plastic gears with  
brass as per  
[GruvenParts.com](http://GruvenParts.com)



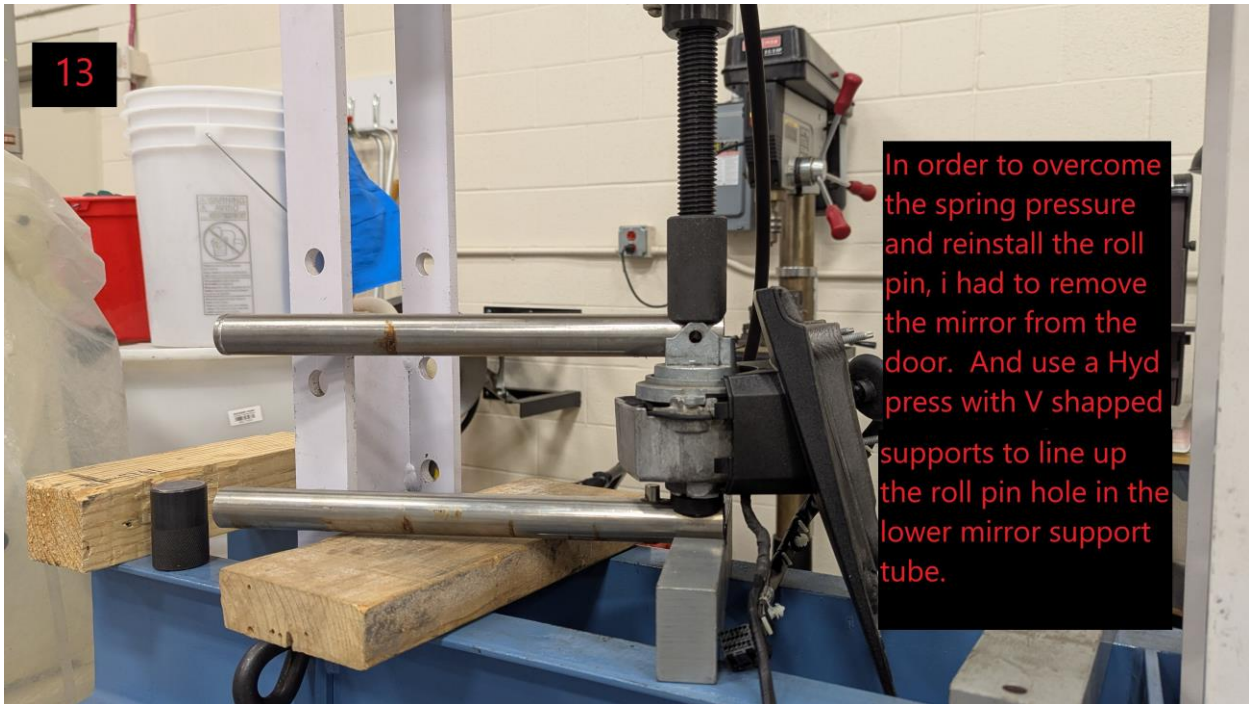


12



Reassemble drive assemble (brass gears not shown) and coat all gears, worm gears and mirror pivot shaft with grease. I used extreme low temp Molykote 33 light grease.

13



In order to overcome the spring pressure and reinstall the roll pin, i had to remove the mirror from the door. And use a Hyd press with V shapped supports to line up the roll pin hole in the lower mirror support tube.

14

There are many youtube videos on how to remove the door panel and mirror mount.

